

HermanMiller

Lino™



At the nexus of comfort and value



Lino

Designed by Sam Hecht and Kim Colin

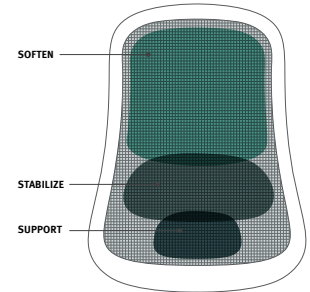
Lino brings scientifically backed comfort and a wide range of aesthetic options to your workplace or home. Charged with designing a high-performance work chair at an exceptional value, award-winning designers Hecht and Colin found inspiration in constraint. Thanks to their design prowess and our ergonomic

expertise—including our patented PostureFit technology—Lino joins our portfolio of high-performance work chairs. At Herman Miller, we think everyone should enjoy good design and comfort while they work, and Lino helps make that possibility a reality.



Performance

Leaning on more than 50 years of Herman Miller's industry-leading research and design, Lino holds the same DNA as the rest of our performance work chairs, offering each person balanced movement and dynamic fit. Its contoured seat works together with its high-performance suspension to give you total spinal support, and the breathable suspension features integrated lumbar support thanks to a composite of different thread tensions.



Lino's proprietary Duo suspension material features three breathable zones of varying tension to provide thoracic, lumbar, and sacral support.



Optional, adjustable back support with PostureFit is available for added comfort in the sacral and lumbar regions.



Customize your Lino Chair by choosing between a Black or Mineral frame, six different suspension colors, and a large variety of upholstery options. For the base, choose a color that matches the frame or, for a sleeker look, turn to polished aluminum.

Design

Lino marries the design expertise of Sam Hecht and Kim Colin to the comfort you'd expect from a Herman Miller task chair. It has been made to our highest quality standards and rigorously engineered, tooled, and tested. That attention to detail is also apparent in the chair's minimal environmental impact. Lino is backed by our 12-year, 3-shift warranty.

About Sam Hecht and Kim Colin

Designers Sam Hecht and Kim Colin of London-based Industrial Facility create work that balances the need to live a full life with the desire to keep things simple. British-born Hecht's contemplative approach and attention to detail complements California-born Colin's architectural sensibility; together they design furniture and products that relate to the landscapes where they are used.

Colin says, "We strive for simplicity of use that is not to the detriment of good functionality." Hecht adds, "What comes out of it is a kind of equilibrium where products are relevant and lasting."



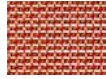
Sam Hecht and Kim Colin

Materials

Lino Chairs are available in a variety of textiles and base finishes. Visit hermanmiller.com/materials to see our complete textile and materials offering.

Lino Chairs

Suspension Back Duo



Price Category 1
Poppy
4RM02



Price Category 1
Green Leaf
4RM03



Price Category 1
Jade
4RM04



Price Category 1
Mineral
4RM01



Price Category 1
Shadow
4RM05



Price Category 1
Graphite
4RM06

Upholstered Seat Textile



Price Category 1
Monologue
Persimmon/1MN09



Price Category 1
Monologue
Blue Spruce/1MN13



Price Category 1
Monologue
Deep Sea/1MN14



Price Category 1
Monologue
Silver Pine/1MN05



Price Category 1
Monologue
Slate/1MN06



Price Category 1
Monologue
Seed/1MN07



Price Category 5
Noble
Heathered
Red/22H20



Price Category 5
Noble
Chipotle/22N02



Price Category 5
Noble
Heathered
Twilight/22H17



Price Category 5
Noble
Blue Grey Mix/22N12



Price Category 5
Noble
Pesto Mix/22N22



Price Category 5
Noble
Heathered
Grey/22H16



Price Category 5
Noble
Heathered
Black/22H15



Price Category B
Messenger
Cassis/T166



Price Category B
Messenger
Spice/T168



Price Category B
Messenger
Poppy/T124



Price Category B
Messenger
Cloud/T131



Price Category B
Messenger
Depth/T138



Price Category B
Messenger
Squall/T163



Price Category B
Messenger
Voyage/T186



Price Category B
Messenger
Husk/T181



Price Category B
Messenger
Ice/T146



Price Category B
Messenger
Oyster/T179



Price Category B
Messenger
Bayou/T108

Frame/Base Finish



Black Frame
Black Base
BK



Mineral Frame
Mineral Base
VPR



Black Frame
Polished Aluminum
68



Mineral Frame
Polished Aluminum
PAM

Family

Work Chair

Stool

Overview

Maximum User Weight

350 lb/159 kg

Seat Height

Standard Cylinder

16 3/4"–20 3/4"

Low Cylinder

14 3/4"–18"

Seat Depth

Fixed

15 3/4"

Adjustable*

15 1/8"–17 7/8"

Back Support

Lumbar Support

Standard

Passive Sacral Support

Standard

Adjustable Sacral Lumbar

Support with PostureFit

Optional

Tilt Options

Semi-synchronous with tilt limiter

Synchronous with tilt limiter

Synchronous with tilt limiter and seat angle

Arm Options

No Arms


Fixed Arms

Height-Adjustable Arms

Fully Adjustable Arms

*work chair only

For more information, please visit hermanmiller.com or call 888 443 4357.

HermanMiller and  are among the registered trademarks of Herman Miller, Inc. Lino is a trademark of Herman Miller, Inc., and its owned subsidiaries. All other trademarks are the property of their respective owners.

© 2018 Herman Miller, Inc., Zeeland, Michigan
All rights reserved.